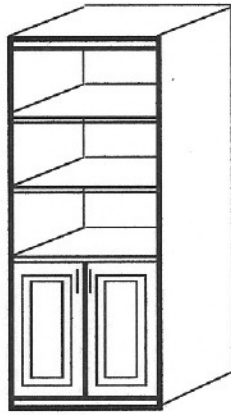
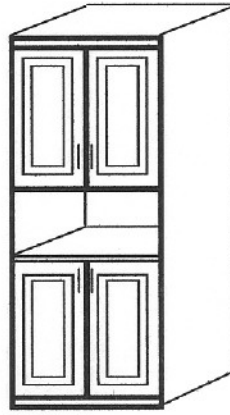


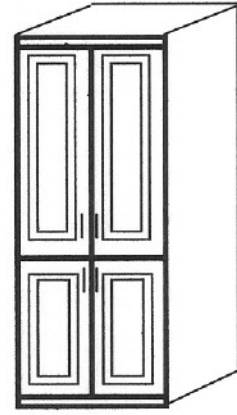
309015-A  
309020-A



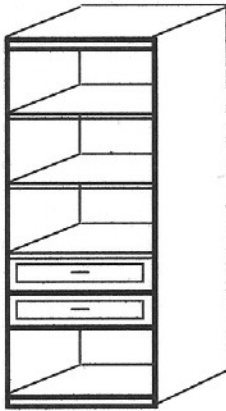
309015-B  
309020-B



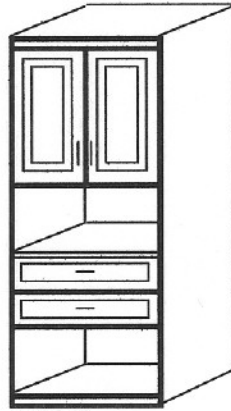
309015-C  
309020-C



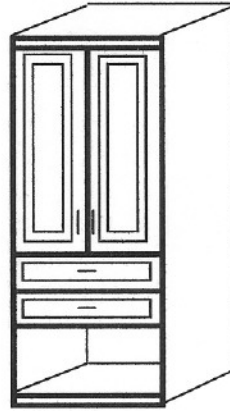
309015-D  
309020-D



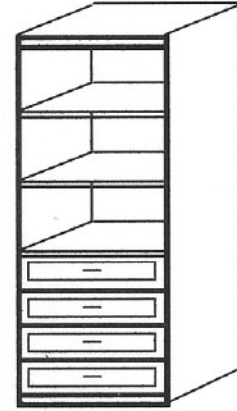
309015-E  
309020-E



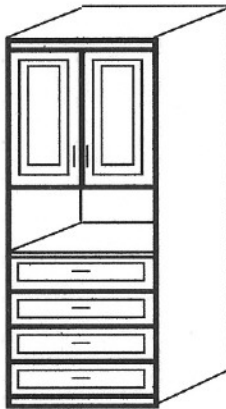
309015-F  
309020-F



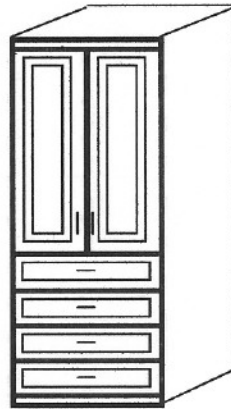
309015-G  
309020-G



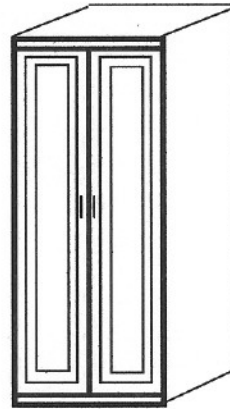
309015-H  
309020-H



309015-I  
309020-I



309015-J  
309020-J



309015-K  
309020-K

**24" & 30" WIDE**  
15" 18" 20" DEEP

**BACKS ARE ADDITIONAL**

brochure

ARCHITECTURAL CABINETRY & FURNITURE MFG., INC.

1970 Corporate sq Longwood, Fl 32750

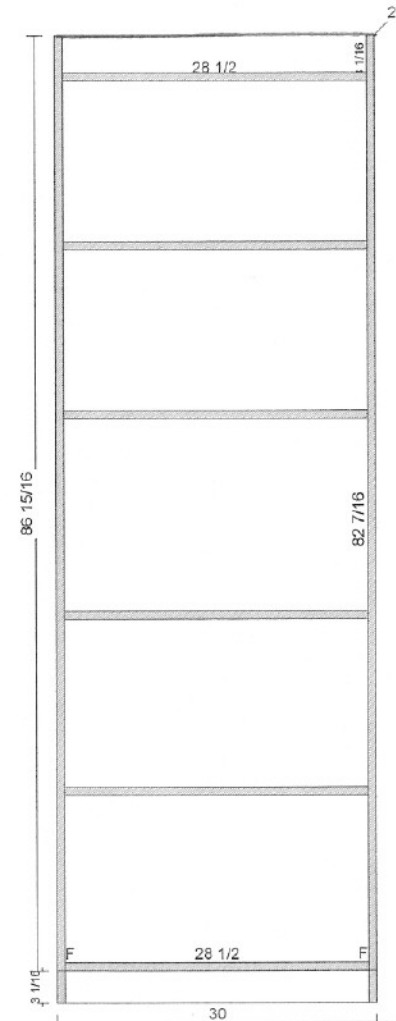
407-331-0600 FAX: 407-331-1800

VISIT OUR WEB SITE: [www.panelbed.com](http://www.panelbed.com)

PANEL STOCK			
(1)	3 1/16	28 1/2	Valance Mel White
(1)	20	90	Finished Left End Mel White
(1)	20	90	Finished Right End Mel White
(1)	20	28 1/2	Deck Mel White
(1)	3 1/16	28 1/2	Front Toe Mel White
(1)	20	28 1/2	Top Mel White
(1)	20	28 1/2	Horiz Partion Mel White
(3)	20	28 1/2	Adjustable Shelf Mel White

CABINET # 1 - A

30 x 90 x 20 ( 1 )



CABINET # 1 - A

L.Reveal = 1/16	R.Reveal = 1/16	T.Reveal = 0	B.Reveal = 1/2
Left End = Finished	Right End = Finished	H.Reveal = 1/8	V.Reveal = 1/8
Toe Height = 3 1/16	Toe Recess = 3/16	Back = Unfinished	

Architectural Cabinetry

www.panelbed.com

This is not exact information, some items may vary

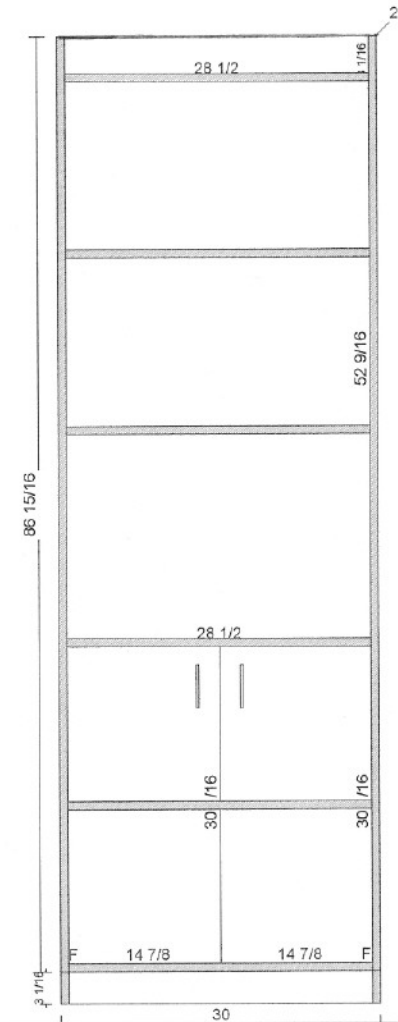
Room # 1 (Room 1) - Wall # 1

Date : 08-21-2003

(2)	<b>DOORS</b>			
	14 7/8	30 1/16	Mel Slab	White Mel
<b>PANEL STOCK</b>				
(1)	3 1/16	28 1/2	Valance	Mel White
(1)	20	90	Finished Left End	Mel White
(1)	20	90	Finished Right End	Mel White
(1)	20	28 1/2	Deck	Mel White
(1)	3 1/16	28 1/2	Front Toe	Mel White
(1)	20	28 1/2	Top	Mel White
(3)	20	28 1/2	Adjustable Shelf	Mel White
(1)	20	28 1/2	Horiz Partion	Mel White
<b>HARDWARE</b>				
(4)	1	2 1/2	Std Hinge	Salice 110
(2)	1/4	4	Door Pull	None Selected

**CABINET # 1 - B**

30 x 90 x 20 ( 1 )



**CABINET # 1 - B**

L.Reveal = 1/16	R.Reveal = 1/16	T.Reveal = 0	B.Reveal = 1/2
		H.Reveal = 1/8	V.Reveal = 1/8
Left End = Finished	Right End = Finished	Back = Unfinished	
Toe Height = 3 1/16	Toe Recess = 3/16		

**Architectural Cabinetry**

www.panelbed.com

This is not exact information, some items may vary

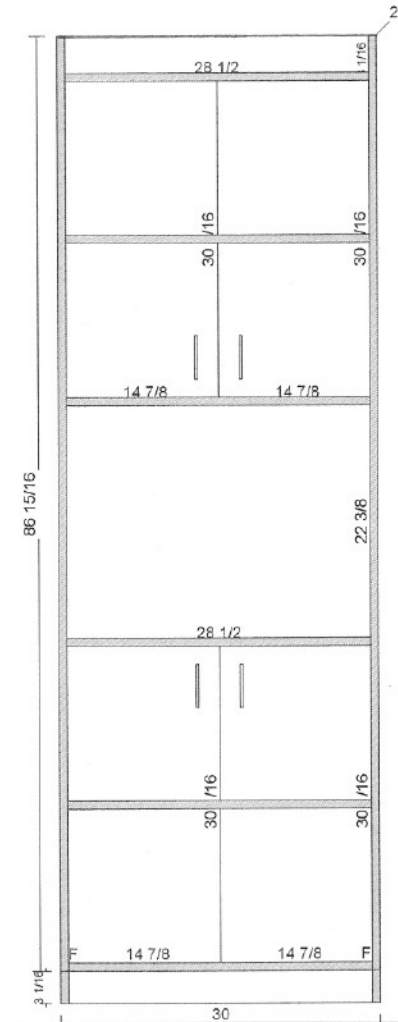
Room # 1 (Room 1) - Wall # 1

Date : 08-21-2003

<b>DOORS</b>			
(4)	14 7/8	30 1/16	Mel Slab White Mel
<b>PANEL STOCK</b>			
(1)	3 1/16	28 1/2	Valance Mel White
(1)	20	90	Finished Left End Mel White
(1)	20	90	Finished Right End Mel White
(1)	20	28 1/2	Deck Mel White
(1)	3 1/16	28 1/2	Front Toe Mel White
(1)	20	28 1/2	Top Mel White
(2)	20	28 1/2	Horiz Partion Mel White
(2)	20	28 1/2	Adjustable Shelf Mel White
<b>HARDWARE</b>			
(8)	1	2 1/2	Std Hinge Salice 110
(4)	1/4	4	Door Pull None Selected

**CABINET # 1 - C**

30 x 90 x 20 ( 1 )



**CABINET # 1 - C**

L.Reveal = 1/16	R.Reveal = 1/16	T.Reveal = 0	B.Reveal = 1/2
Left End = Finished	Right End = Finished	H.Reveal = 1/8	V.Reveal = 1/8
Toe Height = 3 1/16	Toe Recess = 3/16	Back = Unfinished	

**Architectural Cabinetry**

www.panelbed.com

This is not exact information, some items may vary

Room # 1 (Room 1) - Wall # 1

Date : 08-21-2003

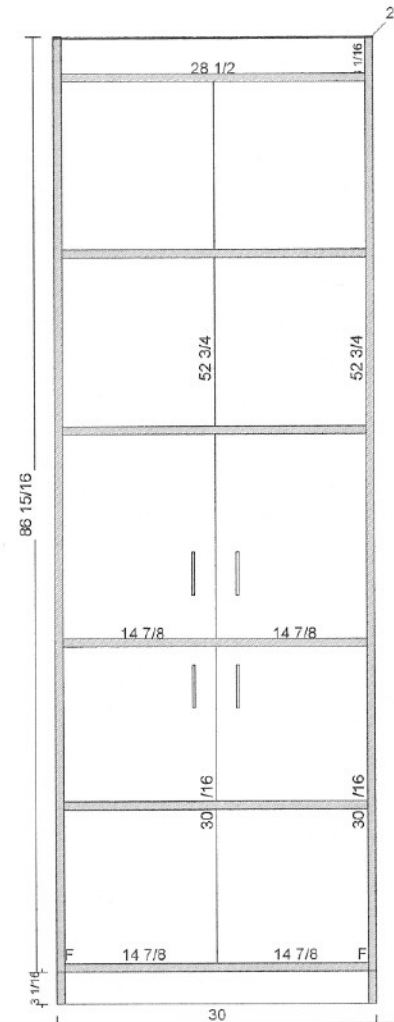
<b>DOORS</b>			
(2)	14 7/8	52 3/4	Mel Slab
(2)	14 7/8	30 1/16	Mel Slab

<b>PANEL STOCK</b>			
(1)	3 1/16	28 1/2	Valance
(1)	20	90	Finished Left End
(1)	20	90	Finished Right End
(1)	20	28 1/2	Deck
(1)	3 1/16	28 1/2	Front Toe
(1)	20	28 1/2	Top
(3)	20	28 1/2	Adjustable Shelf
(1)	20	28 1/2	Horiz Partion

<b>HARDWARE</b>			
(8)	1	2 1/2	Std Hinge
(4)	1/4	4	Door Pull

**CABINET # 1 - D**

30 x 90 x 20 ( 1 )



**CABINET # 1 - D**

L.Reveal = 1/16	R.Reveal = 1/16	T.Reveal = 0	B.Reveal = 1/2
		H.Reveal = 1/8	V.Reveal = 1/8
Left End = Finished	Right End = Finished	Back = Unfinished	
Toe Height = 3 1/16	Toe Recess = 3/16		

**Architectural Cabinetry**

www.panelbed.com

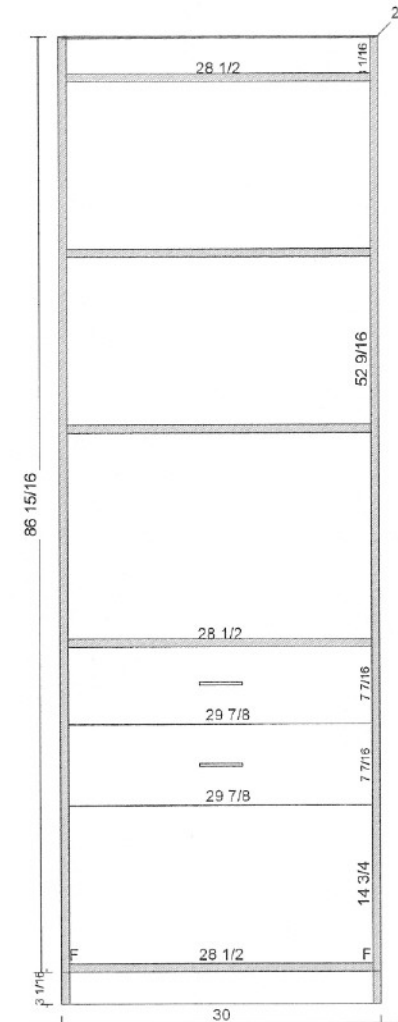
This is not exact information, some items may vary

Room # 1 (Room 1) - Wall # 1

Date : 08-21-2003

<b>DRAWERS</b>			
(2)	29 7/8	7 7/16	Mel front White Mel
<b>PANEL STOCK</b>			
(1)	3 1/16	28 1/2	Valance Mel White
(1)	20	90	Finished Left End Mel White
(1)	20	90	Finished Right End Mel White
(1)	20	28 1/2	Deck Mel White
(1)	3 1/16	28 1/2	Front Toe Mel White
(1)	20	28 1/2	Top Mel White
(1)	20	28 1/2	Horiz Partion Mel White
(2)	20	28 1/2	Adjustable Shelf Mel White
(2)	27 5/16	19 5/8	Drawer Box Bottom Mel white-16mm-48
(2)	5 1/4	27 5/16	Drawer Box Back Mel white-16mm-48
<b>HARDWARE</b>			
(4)	5 5/16	19 11/16	Drawer Guide Metabox 20 x 6
(2)	1/4	4	Drawer Pull None Selected

**CABINET # 1 - E**  
30 x 90 x 20 ( 1 )



**CABINET # 1 - E**

L.Reveal = 1/16	R.Reveal = 1/16	T.Reveal = 0	B.Reveal = 1/2
		H.Reveal = 1/8	V.Reveal = 1/8
Left End = Finished	Right End = Finished	Back = Unfinished	
Toe Height = 3 1/16	Toe Recess = 3/16		

**Architectural Cabinetry**

[www.panelbed.com](http://www.panelbed.com)

This is not exact information, some items may vary

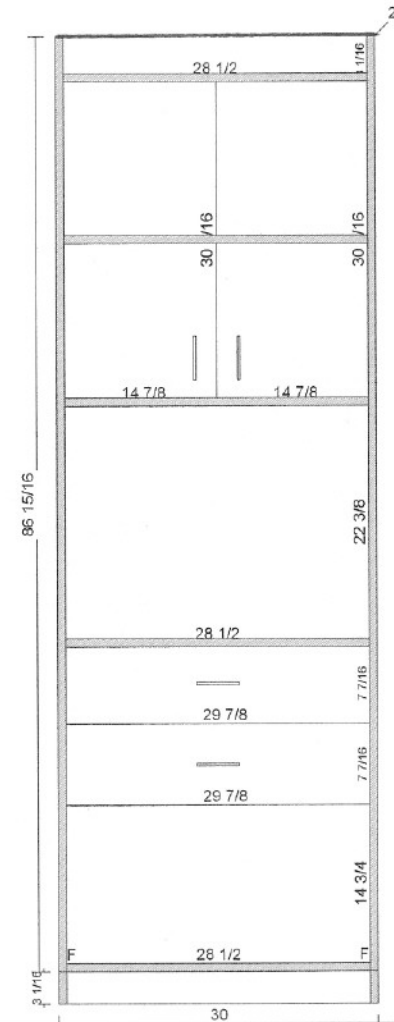
Room # 1 (Room 1) - Wall # 1

Date : 08-21-2003

(2)	DOORS	14 7/8	30 1/16	Mel Slab	White Mel
(2)	DRAWERS	29 7/8	7 7/16	Mel front	White Mel
PANEL STOCK					
(1)		3 1/16	28 1/2	Valance	Mel White
(1)		20	90	Finished Left End	Mel White
(1)		20	90	Finished Right End	Mel White
(1)		20	28 1/2	Deck	Mel White
(1)		3 1/16	28 1/2	Front Toe	Mel White
(1)		20	28 1/2	Top	Mel White
(2)		20	28 1/2	Horiz Partion	Mel White
(1)		20	28 1/2	Adjustable Shelf	Mel White
(2)		27 5/16	19 5/8	Drawer Box Bottom	Mel white-16mm-48
(2)		5 1/4	27 5/16	Drawer Box Back	Mel white-16mm-48
HARDWARE					
(4)		5 5/16	19 11/16	Drawer Guide	Metabox 20 x 6
(4)		1	2 1/2	Std Hinge	Salice 110
(2)		1/4	4	Door Pull	None Selected
(2)		1/4	4	Drawer Pull	None Selected

CABINET # 1 - F

30 x 90 x 20 ( 1 )



CABINET # 1 - F

L.Reveal = 1/16	R.Reveal = 1/16	T.Reveal = 0	B.Reveal = 1/2
Left End = Finished	Right End = Finished	H.Reveal = 1/8	V.Reveal = 1/8
Toe Height = 3 1/16	Toe Recess = 3/16	Back = Unfinished	

Architectural Cabinetry

www.panelbed.com

This is not exact information, some items may vary

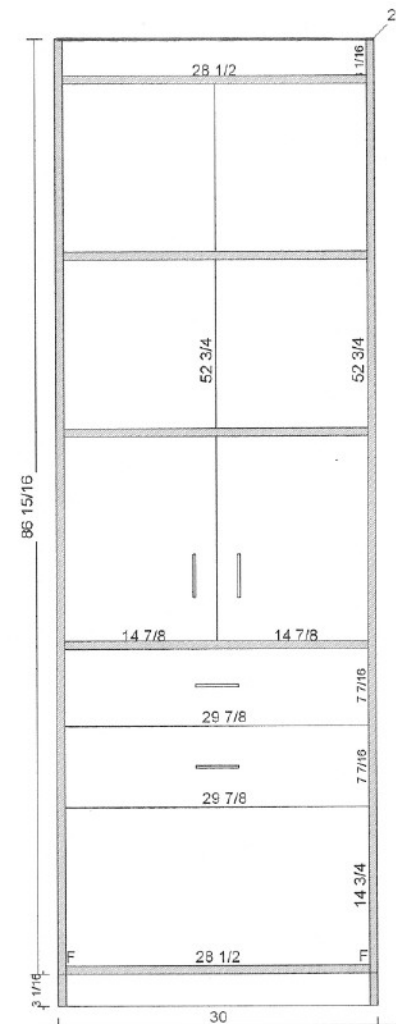
Room # 1 (Room 1) - Wall # 1

Date : 08-21-2003

(2)	DOORS	14 7/8	52 3/4	Mel Slab	White Mel
(2)	DRAWERS	29 7/8	7 7/16	Mel front	White Mel
<b>PANEL STOCK</b>					
(1)	3 1/16	28 1/2	Valance	Mel White	
(1)	20	90	Finished Left End	Mel White	
(1)	20	90	Finished Right End	Mel White	
(1)	20	28 1/2	Deck	Mel White	
(1)	3 1/16	28 1/2	Front Toe	Mel White	
(1)	20	28 1/2	Top	Mel White	
(2)	20	28 1/2	Adjustable Shelf	Mel White	
(1)	20	28 1/2	Horiz Partion	Mel White	
(2)	27 5/16	19 5/8	Drawer Box Bottom	Mel white-16mm-48	
(2)	5 1/4	27 5/16	Drawer Box Back	Mel white-16mm-48	
<b>HARDWARE</b>					
(4)	5 5/16	19 11/16	Drawer Guide	Metabox 20 x 6	
(4)	1	2 1/2	Std Hinge	Salice 110	
(2)	1/4	4	Door Pull	None Selected	
(2)	1/4	4	Drawer Pull	None Selected	

**CABINET # 1 - G**

30 x 90 x 20 ( 1 )



**CABINET # 1 - G**

L.Reveal = 1/16	R.Reveal = 1/16	T.Reveal = 0	B.Reveal = 1/2
		H.Reveal = 1/8	V.Reveal = 1/8
Left End = Finished	Right End = Finished	Back = Unfinished	
Toe Height = 3 1/16	Toe Recess = 3/16		

**Architectural Cabinetry**

[www.panelbed.com](http://www.panelbed.com)

This is not exact information, some items may vary

Room # 1 (Room 1) - Wall # 1

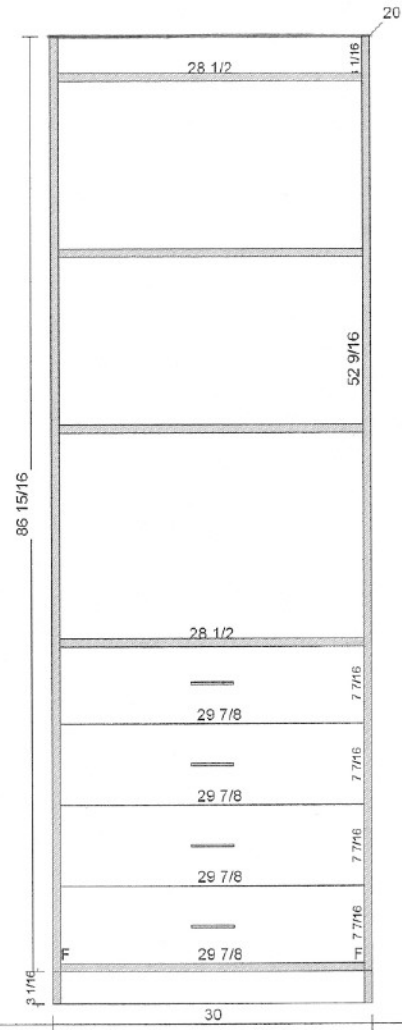
Date : 08-21-2003



<b>DRAWERS</b>			
(4)	29 7/8	7 7/16	Mel front White Mel
<b>PANEL STOCK</b>			
(1)	3 1/16	28 1/2	Valance Mel White
(1)	20	90	Finished Left End Mel White
(1)	20	90	Finished Right End Mel White
(1)	20	28 1/2	Deck Mel White
(1)	3 1/16	28 1/2	Front Toe Mel White
(1)	20	28 1/2	Top Mel White
(1)	20	28 1/2	Horiz Partion Mel White
(2)	20	28 1/2	Adjustable Shelf Mel White
(4)	27 5/16	19 5/8	Drawer Box Bottom Mel white-16mm-48
(4)	5 1/4	27 5/16	Drawer Box Back Mel white-16mm-48
<b>HARDWARE</b>			
(8)	5 5/16	19 11/16	Drawer Guide Metabox 20 x 6
(4)	1/4	4	Drawer Pull None Selected

**CABINET # 1 - H**

30 x 90 x 20 ( 1 )



**CABINET # 1 - H**

L.Reveal = 1/16	R.Reveal = 1/16	T.Reveal = 0	B.Reveal = 1/2
Left End = Finished	Right End = Finished	H.Reveal = 1/8	V.Reveal = 1/8
Toe Height = 3 1/16	Toe Recess = 3/16	Back = Unfinished	

**Architectural Cabinetry**

[www.panelbed.com](http://www.panelbed.com)

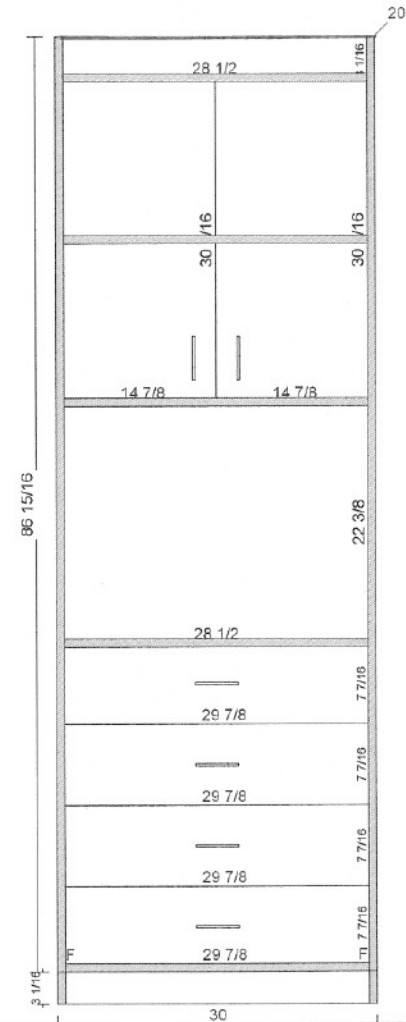
This is not exact information, some items may vary

Room # 1 (Room 1) - Wall # 1

Date : 08-21-2003

(2)	DOORS	14 7/8	30 1/16	Mel Slab	White Mel
(4)	DRAWERS	29 7/8	7 7/16	Mel front	White Mel
<b>PANEL STOCK</b>					
(1)		3 1/16	28 1/2	Valance	Mel White
(1)		20	90	Finished Left End	Mel White
(1)		20	90	Finished Right End	Mel White
(1)		20	28 1/2	Deck	Mel White
(1)		3 1/16	28 1/2	Front Toe	Mel White
(1)		20	28 1/2	Top	Mel White
(2)		20	28 1/2	Horiz Partion	Mel White
(1)		20	28 1/2	Adjustable Shelf	Mel White
(4)		27 5/16	19 5/8	Drawer Box Bottom	Mel white-16mm-48
(4)		5 1/4	27 5/16	Drawer Box Back	Mel white-16mm-48
<b>HARDWARE</b>					
(8)		5 5/16	19 11/16	Drawer Guide	Metabox 20 x 6
(4)		1	2 1/2	Std Hinge	Salice 110
(2)		1/4	4	Door Pull	None Selected
(4)		1/4	4	Drawer Pull	None Selected

**CABINET # 1 - I**  
30 x 90 x 20 ( 1 )



**CABINET # 1 - I**

L.Reveal = 1/16	R.Reveal = 1/16	T.Reveal = 0	B.Reveal = 1/2
		H.Reveal = 1/8	V.Reveal = 1/8
Left End = Finished	Right End = Finished	Back = Unfinished	
Toe Height = 3 1/16	Toe Recess = 3/16		

**Architectural Cabinetry**

[www.panelbed.com](http://www.panelbed.com)

This is not exact information, some items may vary

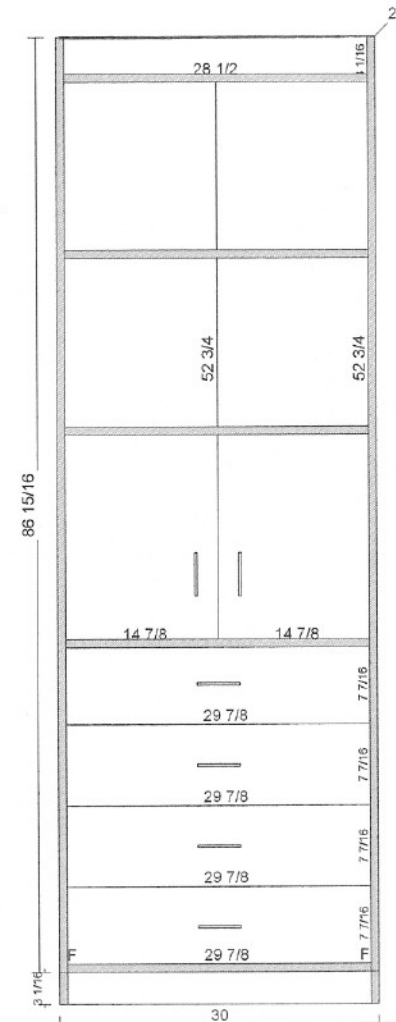
Room # 1 (Room 1) - Wall # 1

Date : 08-21-2003

(2)	DOORS	14 7/8	52 3/4	Mel Slab	White Mel
(4)	DRAWERS	29 7/8	7 7/16	Mel front	White Mel
PANEL STOCK					
(1)	3 1/16	28 1/2	Valance	Mel White	
(1)	20	90	Finished Left End	Mel White	
(1)	20	90	Finished Right End	Mel White	
(1)	20	28 1/2	Deck	Mel White	
(1)	3 1/16	28 1/2	Front Toe	Mel White	
(1)	20	28 1/2	Top	Mel White	
(2)	20	28 1/2	Adjustable Shelf	Mel White	
(1)	20	28 1/2	Horiz Partion	Mel White	
(4)	27 5/16	19 5/8	Drawer Box Bottom	Mel white-16mm-48	
(4)	5 1/4	27 5/16	Drawer Box Back	Mel white-16mm-48	
HARDWARE					
(8)	5 5/16	19 11/16	Drawer Guide	Metabox 20 x 6	
(4)	1	2 1/2	Std Hinge	Salice 110	
(2)	1/4	4	Door Pull	None Selected	
(4)	1/4	4	Drawer Pull	None Selected	

**CABINET # 1 - J**

30 x 90 x 20 ( 1 )



**CABINET # 1 - J**

L.Reveal = 1/16	R.Reveal = 1/16	T.Reveal = 0	B.Reveal = 1/2
Left End = Finished	Right End = Finished	H.Reveal = 1/8	V.Reveal = 1/8
Toe Height = 3 1/16	Toe Recess = 3/16	Back = Unfinished	

Architectural Cabinetry

www.panelbed.com

This is not exact information, some items may vary

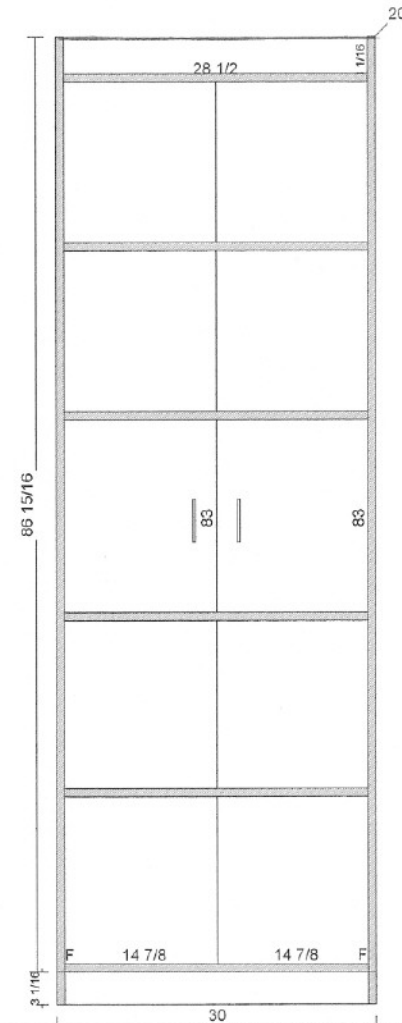
Room # 1 (Room 1) - Wall # 1

Date : 08-21-2003

<b>DOORS</b>			
(2)	14 7/8	83	Mel Slab White Mel
<b>PANEL STOCK</b>			
(1)	3 1/16	28 1/2	Valance Mel White
(1)	20	90	Finished Left End Mel White
(1)	20	90	Finished Right End Mel White
(1)	20	28 1/2	Deck Mel White
(1)	3 1/16	28 1/2	Front Toe Mel White
(1)	20	28 1/2	Top Mel White
(1)	20	28 1/2	Horiz Partion Mel White
(3)	20	28 1/2	Adjustable Shelf Mel White
<b>HARDWARE</b>			
(8)	1	2 1/2	Std Hinge Salice 110
(2)	1/4	4	Door Pull None Selected

**CABINET # 1 - K**

30 x 90 x 20 ( 1 )



**CABINET # 1 - K**

L.Reveal = 1/16	R.Reveal = 1/16	T.Reveal = 0	B.Reveal = 1/2
Left End = Finished	Right End = Finished	H.Reveal = 1/8	V.Reveal = 1/8
Toe Height = 3 1/16	Toe Recess = 3/16	Back = Unfinished	

**Architectural Cabinetry**

[www.panelbed.com](http://www.panelbed.com)

This is not exact information, some items may vary

Room # 1 (Room 1) - Wall # 1

Date : 08-21-2003