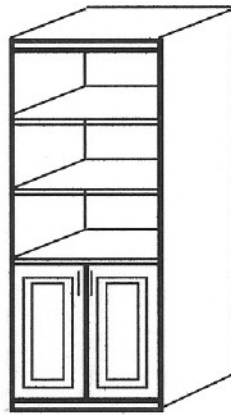
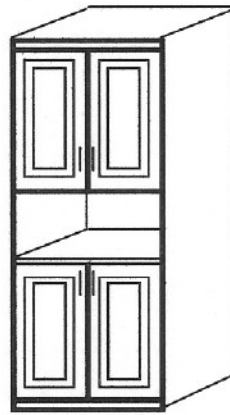


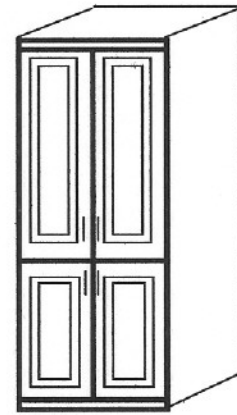
308515-A
308520-A



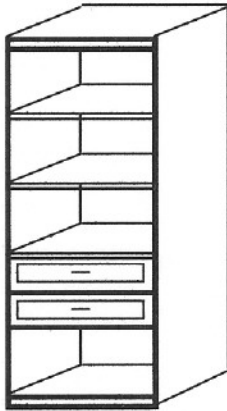
308515-B
308520-B



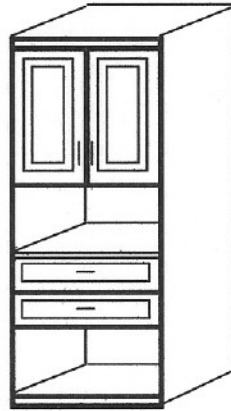
308515-C
308520-C



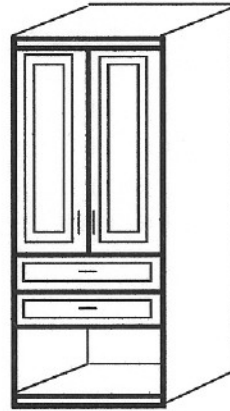
308515-D
308520-D



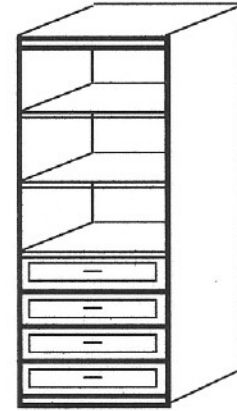
308515-E
308520-E



308515-F
308520-F



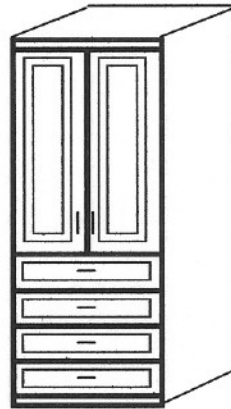
308515-G
308520-G



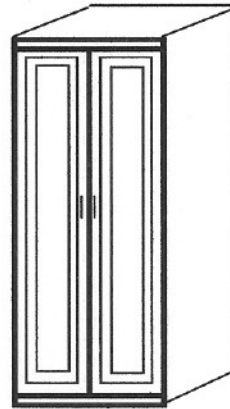
308515-H
308520-H



308515-I
308520-I



308515-J
308520-J



308515-K
308520-K

24" & 30" WIDE
15" 18" 20" DEEP

BACKS ARE ADDITIONAL

brochure

ARCHITECTURAL CABINETRY & FURNITURE MFG., INC.

1970 Corporate sq Longwood, Fl 32750

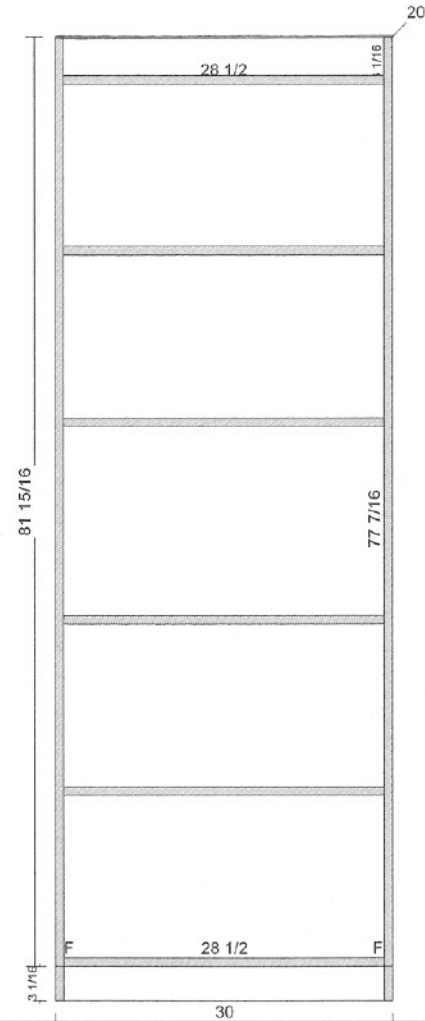
407-331-0600 FAX: 407-331-1800

VISIT OUR WEB SITE: www.panelbed.com

PANEL STOCK			
(1)	3 1/16	28 1/2	Valance Mel White
(1)	20	85	Finished Left End Mel White
(1)	20	85	Finished Right End Mel White
(1)	20	28 1/2	Deck Mel White
(1)	3 1/16	28 1/2	Front Toe Mel White
(1)	20	28 1/2	Top Mel White
(1)	20	28 1/2	Horiz Partion Mel White
(3)	20	28 1/2	Adjustable Shelf Mel White

CABINET # 1 - A

30 x 85 x 20 (1)



CABINET # 1 - A

L.Reveal = 1/16	R.Reveal = 1/16	T.Reveal = 0	B.Reveal = 1/2
Left End = Finished	Right End = Finished	H.Reveal = 1/8	V.Reveal = 1/8
Toe Height = 3 1/16	Toe Recess = 3/16	Back = Unfinished	

Architectural Cabinetry

www.panelbed.com

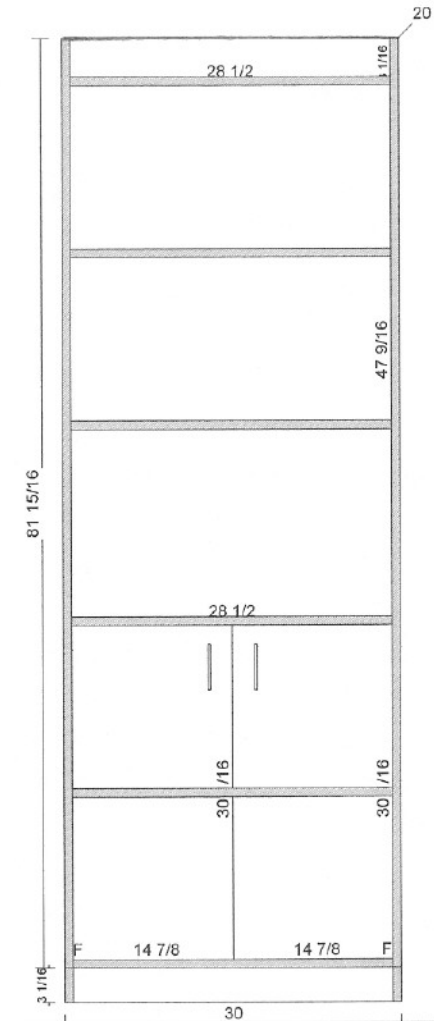
This is not exact information, some items may vary

Room # 1 (Room 1) - Wall # 1

Date : 08-21-2003

(2)	DOORS	14 7/8	30 1/16	Mel Slab	White Mel
(1)	PANEL STOCK	3 1/16	28 1/2	Valance	Mel White
(1)		20	85	Finished Left End	Mel White
(1)		20	85	Finished Right End	Mel White
(1)		20	28 1/2	Deck	Mel White
(1)		3 1/16	28 1/2	Front Toe	Mel White
(1)		20	28 1/2	Top	Mel White
(3)		20	28 1/2	Adjustable Shelf	Mel White
(1)		20	28 1/2	Horiz Partion	Mel White
(4)	HARDWARE	1	2 1/2	Std Hinge	Salice 110
(2)		1/4	4	Door Pull	None Selected

CABINET # 1 - B
30 x 85 x 20 (1)



CABINET # 1 - B

L.Reveal = 1/16	R.Reveal = 1/16	T.Reveal = 0	B.Reveal = 1/2
Left End = Finished	Right End = Finished	H.Reveal = 1/8	V.Reveal = 1/8
Toe Height = 3 1/16	Toe Recess = 3/16	Back = Unfinished	

Architectural Cabinetry

www.panelbed.com

This is not exact information, some items may vary

Room # 1 (Room 1) - Wall # 1

Date : 08-21-2003

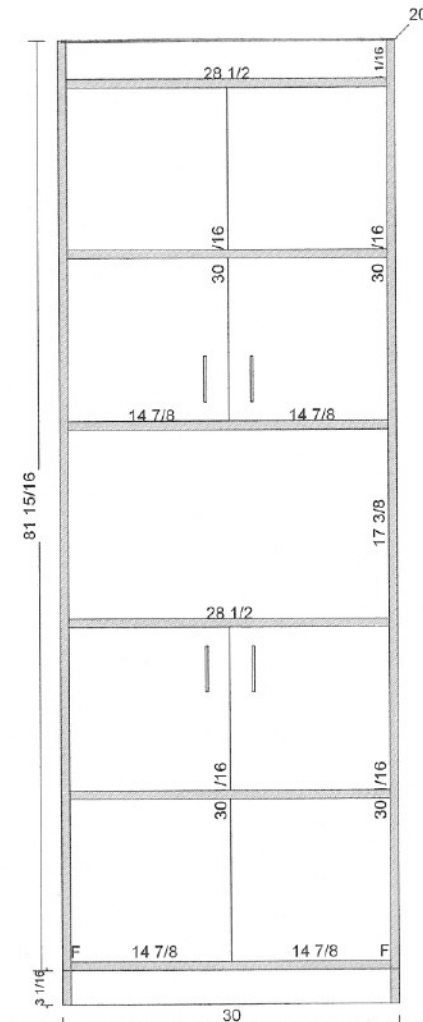
DOORS				
(2)	14 7/8	30 1/16	Mel Slab	White Mel
(2)	14 7/8	30 1/16	Mel Slab	White Mel

PANEL STOCK				
(1)	3 1/16	28 1/2	Valance	Mel White
(1)	20	85	Finished Left End	Mel White
(1)	20	85	Finished Right End	Mel White
(1)	20	28 1/2	Deck	Mel White
(1)	3 1/16	28 1/2	Front Toe	Mel White
(1)	20	28 1/2	Top	Mel White
(2)	20	28 1/2	Horiz Partion	Mel White
(2)	20	28 1/2	Adjustable Shelf	Mel White

HARDWARE				
(8)	1	2 1/2	Std Hinge	Salice 110
(4)	1/4	4	Door Pull	None Selected

CABINET # 1 - C

30 x 85 x 20 (1)



CABINET # 1 - C

L.Reveal = 1/16	R.Reveal = 1/16	T.Reveal = 0	B.Reveal = 1/2
Left End = Finished	Right End = Finished	H.Reveal = 1/8	V.Reveal = 1/8
Toe Height = 3 1/16	Toe Recess = 3/16	Back = Unfinished	

Architectural Cabinetry

www.panelbed.com

This is not exact information, some items may vary

Room # 1 (Room 1) - Wall # 1

Date : 08-21-2003

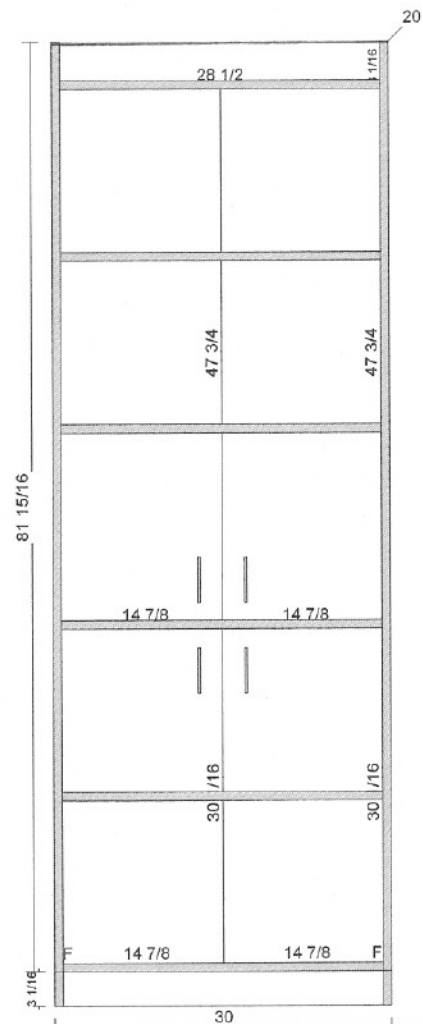
DOORS				
(2)	14 7/8	47 3/4	Mel Slab	White Mel
(2)	14 7/8	30 1/16	Mel Slab	White Mel

PANEL STOCK				
(1)	3 1/16	28 1/2	Valance	Mel White
(1)	20	85	Finished Left End	Mel White
(1)	20	85	Finished Right End	Mel White
(1)	20	28 1/2	Deck	Mel White
(1)	3 1/16	28 1/2	Front Toe	Mel White
(1)	20	28 1/2	Top	Mel White
(3)	20	28 1/2	Adjustable Shelf	Mel White
(1)	20	28 1/2	Horiz Partion	Mel White

HARDWARE				
(8)	1	2 1/2	Std Hinge	Salice 110
(4)	1/4	4	Door Pull	None Selected

CABINET # 1 - D

30 x 85 x 20 (1)



CABINET # 1 - D

L.Reveal = 1/16	R.Reveal = 1/16	T.Reveal = 0	B.Reveal = 1/2
Left End = Finished	Right End = Finished	H.Reveal = 1/8	V.Reveal = 1/8
Toe Height = 3 1/16	Toe Recess = 3/16	Back = Unfinished	

Architectural Cabinetry

www.panelbed.com

This is not exact information, some items may vary

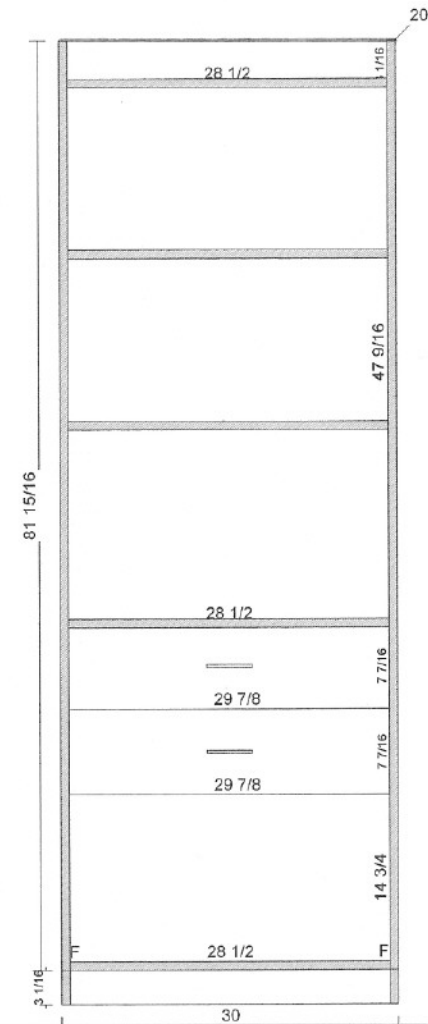
Room # 1 (Room 1) - Wall # 1

Date : 08-21-2003

DRAWERS			
(2)	29 7/8	7 7/16	Mel front White Mel
PANEL STOCK			
(1)	3 1/16	28 1/2	Valance Mel White
(1)	20	85	Finished Left End Mel White
(1)	20	85	Finished Right End Mel White
(1)	20	28 1/2	Deck Mel White
(1)	3 1/16	28 1/2	Front Toe Mel White
(1)	20	28 1/2	Top Mel White
(1)	20	28 1/2	Horiz Partion Mel White
(2)	20	28 1/2	Adjustable Shelf Mel White
(2)	27 5/16	19 5/8	Drawer Box Bottom Mel white-16mm-48
(2)	5 1/4	27 5/16	Drawer Box Back Mel white-16mm-48
HARDWARE			
(4)	5 5/16	19 11/16	Drawer Guide Metabox 20 x 6
(2)	1/4	4	Drawer Pull None Selected

CABINET # 1 - E

30 x 85 x 20 (1)



CABINET # 1 - E

L.Reveal = 1/16	R.Reveal = 1/16	T.Reveal = 0	B.Reveal = 1/2
		H.Reveal = 1/8	V.Reveal = 1/8
Left End = Finished	Right End = Finished	Back = Unfinished	
Toe Height = 3 1/16	Toe Recess = 3/16		

Architectural Cabinetry

www.panelbed.com

This is not exact information, some items may vary

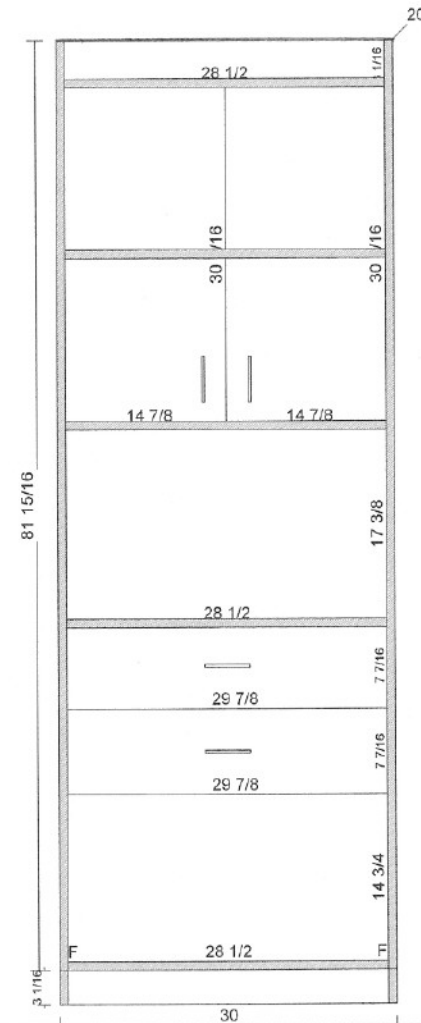
Room # 1 (Room 1) - Wall # 1

Date : 08-21-2003

(2)	DOORS	14 7/8	30 1/16	Mel Slab	White Mel
(2)	DRAWERS	29 7/8	7 7/16	Mel front	White Mel
PANEL STOCK					
(1)	3 1/16	28 1/2	Valance	Mel White	
(1)	20	85	Finished Left End	Mel White	
(1)	20	85	Finished Right End	Mel White	
(1)	20	28 1/2	Deck	Mel White	
(1)	3 1/16	28 1/2	Front Toe	Mel White	
(1)	20	28 1/2	Top	Mel White	
(2)	20	28 1/2	Horiz Partion	Mel White	
(1)	20	28 1/2	Adjustable Shelf	Mel White	
(2)	27 5/16	19 5/8	Drawer Box Bottom	Mel white-16mm-48	
(2)	5 1/4	27 5/16	Drawer Box Back	Mel white-16mm-48	
HARDWARE					
(4)	5 5/16	19 11/16	Drawer Guide	Metabox 20 x 6	
(4)	1	2 1/2	Std Hinge	Salice 110	
(2)	1/4	4	Door Pull	None Selected	
(2)	1/4	4	Drawer Pull	None Selected	

CABINET # 1 - F

30 x 85 x 20 (1)



CABINET # 1 - F

L.Reveal = 1/16	R.Reveal = 1/16	T.Reveal = 0	B.Reveal = 1/2
		H.Reveal = 1/8	V.Reveal = 1/8
Left End = Finished	Right End = Finished	Back = Unfinished	
Toe Height = 3 1/16	Toe Recess = 3/16		

Architectural Cabinetry

www.panelbed.com

This is not exact information, some items may vary

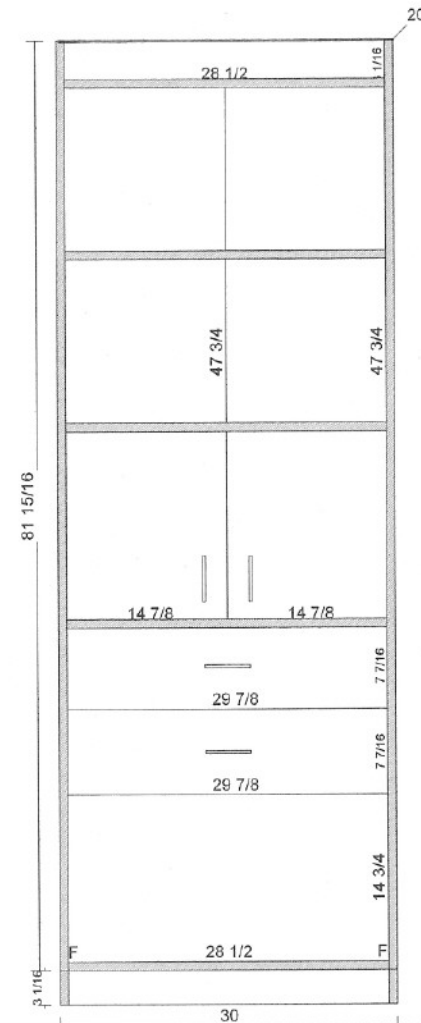
Room # 1 (Room 1) - Wall # 1

Date : 08-21-2003

(2)	DOORS	14 7/8	47 3/4	Mel Slab	White Mel
(2)	DRAWERS	29 7/8	7 7/16	Mel front	White Mel
PANEL STOCK					
(1)	3 1/16	28 1/2	Valance	Mel White	
(1)	20	85	Finished Left End	Mel White	
(1)	20	85	Finished Right End	Mel White	
(1)	20	28 1/2	Deck	Mel White	
(1)	3 1/16	28 1/2	Front Toe	Mel White	
(1)	20	28 1/2	Top	Mel White	
(2)	20	28 1/2	Adjustable Shelf	Mel White	
(1)	20	28 1/2	Horiz Partion	Mel White	
(2)	27 5/16	19 5/8	Drawer Box Bottom	Mel white-16mm-48	
(2)	5 1/4	27 5/16	Drawer Box Back	Mel white-16mm-48	
HARDWARE					
(4)	5 5/16	19 11/16	Drawer Guide	Metabox 20 x 6	
(6)	1	2 1/2	Std Hinge	Salice 110	
(2)	1/4	4	Door Pull	None Selected	
(2)	1/4	4	Drawer Pull	None Selected	

CABINET # 1 - G

30 x 85 x 20 (1)



CABINET # 1 - G

L.Reveal = 1/16	R.Reveal = 1/16	T.Reveal = 0	B.Reveal = 1/2
		H.Reveal = 1/8	V.Reveal = 1/8
Left End = Finished	Right End = Finished	Back = Unfinished	
Toe Height = 3 1/16	Toe Recess = 3/16		

Architectural Cabinetry

www.panelbed.com

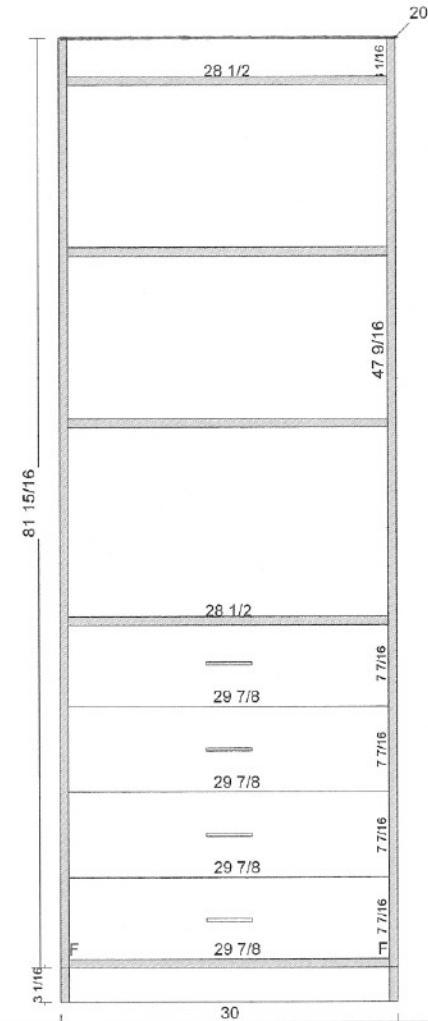
This is not exact information, some items may vary

Room # 1 (Room 1) - Wall # 1

Date : 08-21-2003

DRAWERS			
(4)	29 7/8	7 7/16	Mel front White Mel
PANEL STOCK			
(1)	3 1/16	28 1/2	Valance Mel White
(1)	20	85	Finished Left End Mel White
(1)	20	85	Finished Right End Mel White
(1)	20	28 1/2	Deck Mel White
(1)	3 1/16	28 1/2	Front Toe Mel White
(1)	20	28 1/2	Top Mel White
(1)	20	28 1/2	Horiz Partion Mel White
(2)	20	28 1/2	Adjustable Shelf Mel White
(4)	27 5/16	19 5/8	Drawer Box Bottom Mel white-16mm-48
(4)	5 1/4	27 5/16	Drawer Box Back Mel white-16mm-48
HARDWARE			
(8)	5 5/16	19 11/16	Drawer Guide Metabox 20 x 6
(4)	1/4	4	Drawer Pull None Selected

CABINET # 1 - H
30 x 85 x 20 (1)



CABINET # 1 - H

L.Reveal = 1/16	R.Reveal = 1/16	T.Reveal = 0	B.Reveal = 1/2
		H.Reveal = 1/8	V.Reveal = 1/8
Left End = Finished	Right End = Finished	Back = Unfinished	
Toe Height = 3 1/16	Toe Recess = 3/16		

Architectural Cabinetry

www.panelbed.com

This is not exact information, some items may vary

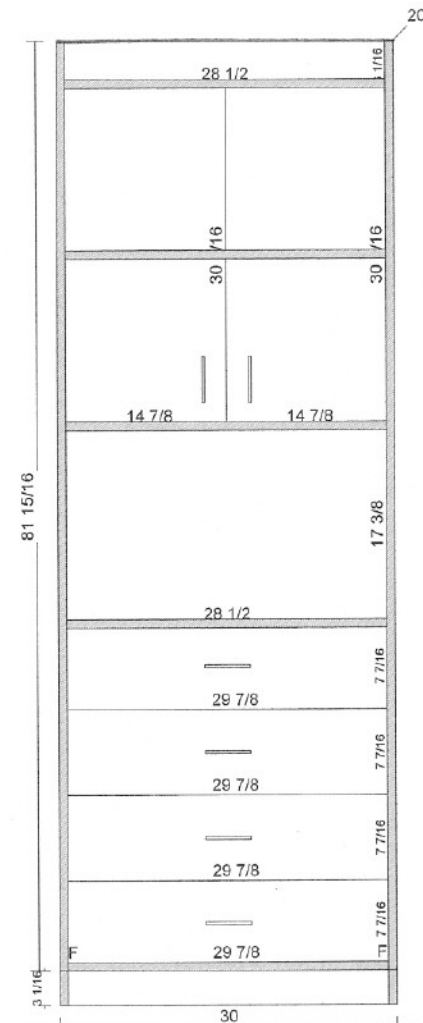
Room # 1 (Room 1) - Wall # 1

Date : 08-21-2003

(2)	DOORS	14 7/8	30 1/16	Mel Slab	White Mel
(4)	DRAWERS	29 7/8	7 7/16	Mel front	White Mel
PANEL STOCK					
(1)	3 1/16	28 1/2	Valance	Mel White	
(1)	20	85	Finished Left End	Mel White	
(1)	20	85	Finished Right End	Mel White	
(1)	20	28 1/2	Deck	Mel White	
(1)	3 1/16	28 1/2	Front Toe	Mel White	
(1)	20	28 1/2	Top	Mel White	
(2)	20	28 1/2	Horiz Partion	Mel White	
(1)	20	28 1/2	Adjustable Shelf	Mel White	
(4)	27 5/16	19 5/8	Drawer Box Bottom	Mel white-16mm-48	
(4)	5 1/4	27 5/16	Drawer Box Back	Mel white-16mm-48	
HARDWARE					
(8)	5 5/16	19 11/16	Drawer Guide	Metabox 20 x 6	
(4)	1	2 1/2	Std Hinge	Salice 110	
(2)	1/4	4	Door Pull	None Selected	
(4)	1/4	4	Drawer Pull	None Selected	

CABINET # 1 - I

30 x 85 x 20 (1)



CABINET # 1 - I

L.Reveal = 1/16	R.Reveal = 1/16	T.Reveal = 0	B.Reveal = 1/2
Left End = Finished	Right End = Finished	H.Reveal = 1/8	V.Reveal = 1/8
Toe Height = 3 1/16	Toe Recess = 3/16	Back = Unfinished	

Architectural Cabinetry

www.panelbed.com

This is not exact information, some items may vary

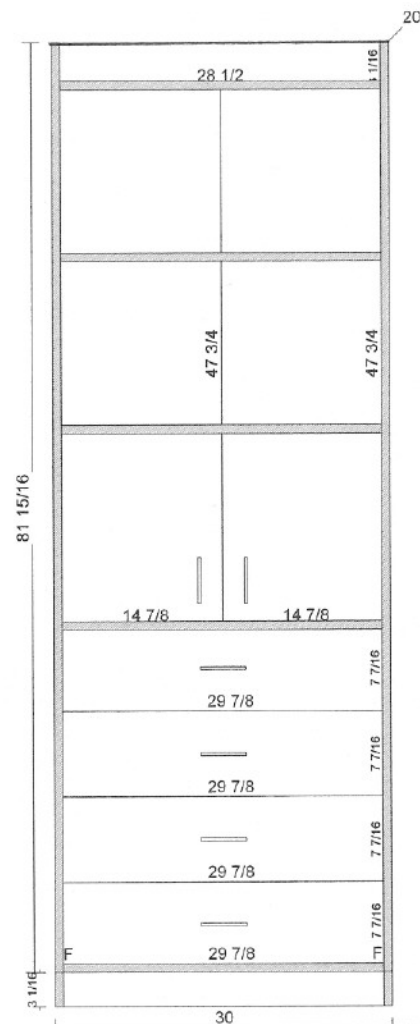
Room # 1 (Room 1) - Wall # 1

Date : 08-21-2003

(2)	DOORS			
	14 7/8	47 3/4	Mel Slab	White Mel
(4)	DRAWERS			
	29 7/8	7 7/16	Mel front	White Mel
	PANEL STOCK			
(1)	3 1/16	28 1/2	Valance	Mel White
(1)	20	85	Finished Left End	Mel White
(1)	20	85	Finished Right End	Mel White
(1)	20	28 1/2	Deck	Mel White
(1)	3 1/16	28 1/2	Front Toe	Mel White
(1)	20	28 1/2	Top	Mel White
(2)	20	28 1/2	Adjustable Shelf	Mel White
(1)	20	28 1/2	Horiz Partion	Mel White
(4)	27 5/16	19 5/8	Drawer Box Bottom	Mel white-16mm-48
(4)	5 1/4	27 5/16	Drawer Box Back	Mel white-16mm-48
	HARDWARE			
(8)	5 5/16	19 11/16	Drawer Guide	Metabox 20 x 6
(4)	1	2 1/2	Std Hinge	Salice 110
(2)	1/4	4	Door Pull	None Selected
(4)	1/4	4	Drawer Pull	None Selected

CABINET # 1 - J

30 x 85 x 20 (1)



CABINET # 1 - J

L.Reveal = 1/16	R.Reveal = 1/16	T.Reveal = 0	B.Reveal = 1/2
		H.Reveal = 1/8	V.Reveal = 1/8
Left End = Finished	Right End = Finished	Back = Unfinished	
Toe Height = 3 1/16	Toe Recess = 3/16		

Architectural Cabinetry

www.panelbed.com

This is not exact information, some items may vary

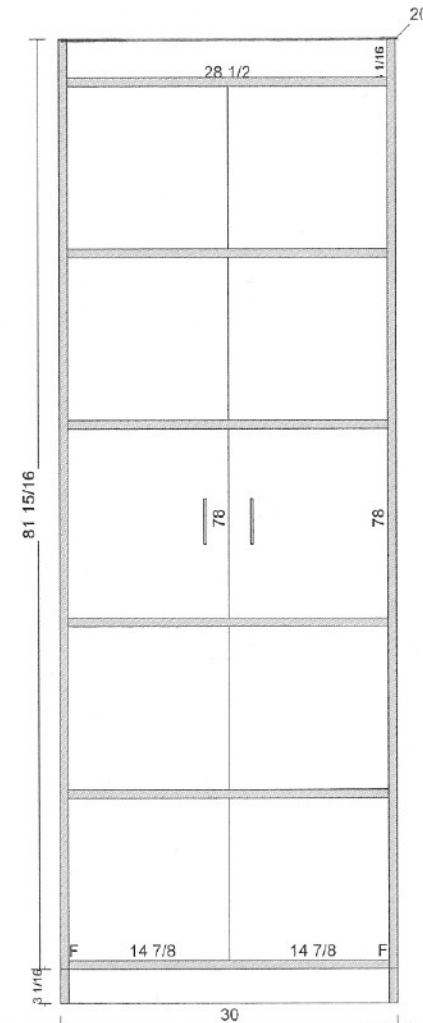
Room # 1 (Room 1) - Wall # 1

Date : 08-21-2003

(2)	DOORS			
	14 7/8	78	Mel Slab	White Mel
PANEL STOCK				
(1)	3 1/16	28 1/2	Valance	Mel White
(1)	20	85	Finished Left End	Mel White
(1)	20	85	Finished Right End	Mel White
(1)	20	28 1/2	Deck	Mel White
(1)	3 1/16	28 1/2	Front Toe	Mel White
(1)	20	28 1/2	Top	Mel White
(1)	20	28 1/2	Horiz Partion	Mel White
(3)	20	28 1/2	Adjustable Shelf	Mel White
HARDWARE				
(8)	1	2 1/2	Std Hinge	Salice 110
(2)	1/4	4	Door Pull	None Selected

CABINET # 1 - K

30 x 85 x 20 (1)



CABINET # 1 - K

L.Reveal = 1/16	R.Reveal = 1/16	T.Reveal = 0	B.Reveal = 1/2
		H.Reveal = 1/8	V.Reveal = 1/8
Left End = Finished	Right End = Finished	Back = Unfinished	
Toe Height = 3 1/16	Toe Recess = 3/16		

Architectural Cabinetry

www.panelbed.com

This is not exact information, some items may vary

Room # 1 (Room 1) - Wall # 1

Date : 08-21-2003