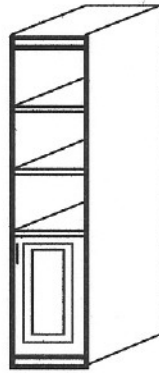
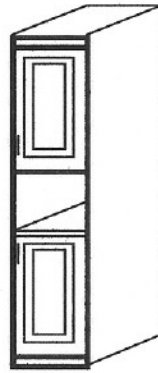


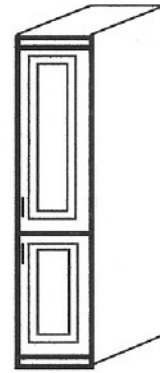
159015-A
159020-A



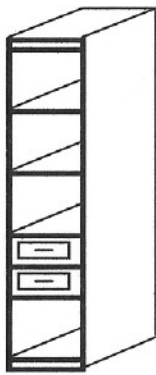
159015-B
159020-B



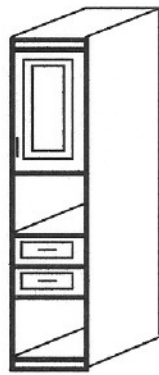
159015-C
159020-C



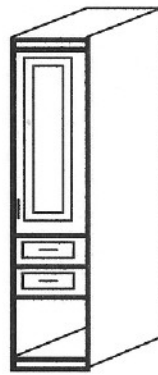
159015-D
159020-D



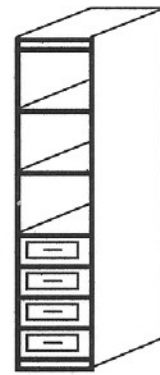
159015-E
159020-E



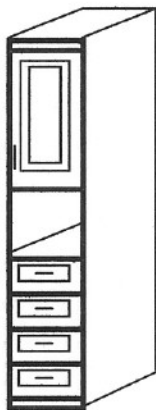
159015-F
159020-F



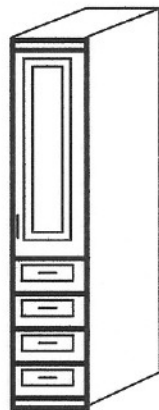
159015-G
159020-G



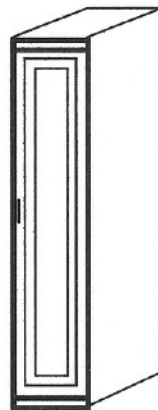
159015-H
159020-H



159015-I
159020-I



159015-J
159020-J



159015-K
159020-K

15" & 18" WIDE
15" 16" 18" 20" DEEP

BACKS ARE ADDITIONAL

brochure

ARCHITECTURAL CABINETS & FURNITURE MFG., INC.

1970 Corporate sq Longwood, FL 32750

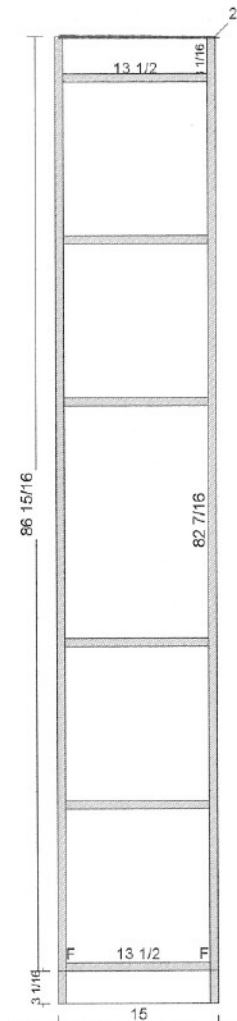
407-331-0600 FAX: 407-331-1800

VISIT OUR WEB SITE: www.panelbed.com

PANEL STOCK					
(1)	3 1/16	13 1/2	Valance	Mel White	
(1)	20	90	Finished Left End	Mel White	
(1)	20	90	Finished Right End	Mel White	
(1)	20	13 1/2	Deck	Mel White	
(1)	3 1/16	13 1/2	Front Toe	Mel White	
(1)	20	13 1/2	Top	Mel White	
(3)	20	13 1/2	Adjustable Shelf	Mel White	
(1)	20	13 1/2	Horiz Partion	Mel White	

CABINET # 1 - A

15 x 90 x 20 (1)



CABINET # 1 - A

L.Reveal = 1/16	R.Reveal = 1/16	T.Reveal = 0	B.Reveal = 1/2
Left End = Finished	Right End = Finished	H.Reveal = 1/8	V.Reveal = 1/8
Toe Height = 3 1/16	Toe Recess = 3/16	Back = Unfinished	

Architectural Cabinetry

www.panelbed.com

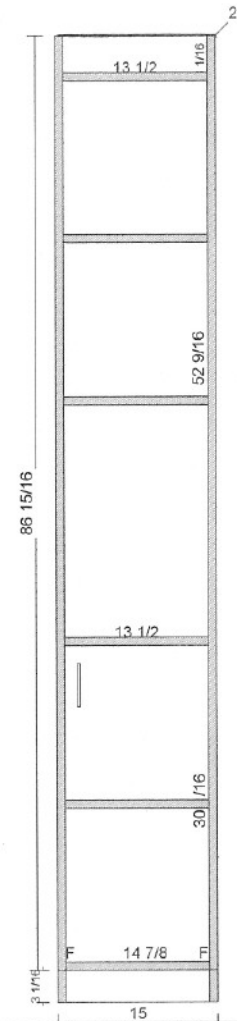
This is not exact information, some items may vary

Room # 1 (Room 1) - Wall # 1

Date : 08-22-2003

	DOORS			
(1)	14 7/8	30 1/16	Mel Slab	White Mel
	PANEL STOCK			
(1)	3 1/16	13 1/2	Valance	Mel White
(1)	20	90	Finished Left End	Mel White
(1)	20	90	Finished Right End	Mel White
(1)	20	13 1/2	Deck	Mel White
(1)	3 1/16	13 1/2	Front Toe	Mel White
(1)	20	13 1/2	Top	Mel White
(1)	20	13 1/2	Horiz Partion	Mel White
(3)	20	13 1/2	Adjustable Shelf	Mel White
	HARDWARE			
(2)	1	2 1/2	Std Hinge	Salice 110
(1)	1/4	4	Door Pull	None Selected

CABINET # 1 - B
15 x 90 x 20 (1)



CABINET # 1 - B

L.Reveal = 1/16	R.Reveal = 1/16	T.Reveal = 0	B.Reveal = 1/2
Left End = Finished	Right End = Finished	H.Reveal = 1/8	V.Reveal = 1/8
Toe Height = 3 1/16	Toe Recess = 3/16	Back = Unfinished	

Architectural Cabinetry

www.panelbed.com

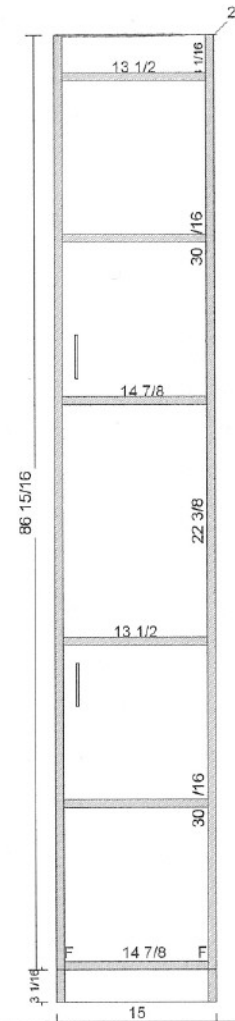
This is not exact information, some items may vary

Room # 1 (Room 1) - Wall # 1

Date : 08-22-2003

(2)	DOORS	14 7/8	30 1/16	Mel Slab	White Mel
(1)	PANEL STOCK	3 1/16	13 1/2	Valance	Mel White
(1)		20	90	Finished Left End	Mel White
(1)		20	90	Finished Right End	Mel White
(1)		20	13 1/2	Deck	Mel White
(1)		3 1/16	13 1/2	Front Toe	Mel White
(1)		20	13 1/2	Top	Mel White
(1)		20	13 1/2	Horiz Partion	Mel White
(3)		20	13 1/2	Adjustable Shelf	Mel White
(4)	HARDWARE	1	2 1/2	Std Hinge	Salice 110
(2)		1/4	4	Door Pull	None Selected

CABINET # 1 - C
15 x 90 x 20 (1)



CABINET # 1 - C

L.Reveal = 1/16	R.Reveal = 1/16	T.Reveal = 0	B.Reveal = 1/2
Left End = Finished	Right End = Finished	H.Reveal = 1/8	V.Reveal = 1/8
Toe Height = 3 1/16	Toe Recess = 3/16	Back = Unfinished	

Architectural Cabinetry

www.panelbed.com

This is not exact information, some items may vary

Room # 1 (Room 1) - Wall # 1

Date : 08-22-2003

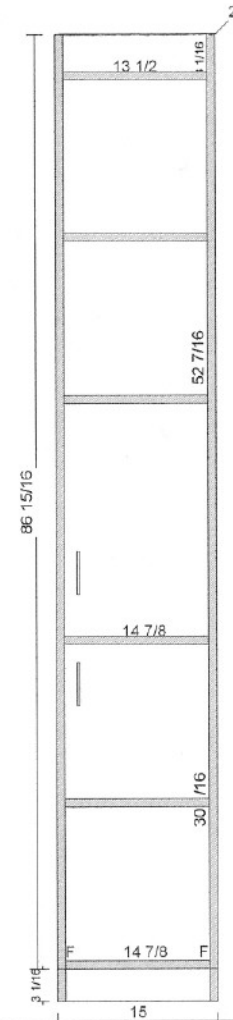
DOORS				
(1)	14 7/8	52 7/16	Mel Slab	White Mel
(1)	14 7/8	30 1/16	Mel Slab	White Mel

PANEL STOCK				
(1)	3 1/16	13 1/2	Valance	Mel White
(1)	20	90	Finished Left End	Mel White
(1)	20	90	Finished Right End	Mel White
(1)	20	13 1/2	Deck	Mel White
(1)	3 1/16	13 1/2	Front Toe	Mel White
(1)	20	13 1/2	Top	Mel White
(1)	20	13 1/2	Horiz Partion	Mel White
(3)	20	13 1/2	Adjustable Shelf	Mel White

HARDWARE				
(4)	1	2 1/2	Std Hinge	Salice 110
(2)	1/4	4	Door Pull	None Selected

CABINET # 1 - D

15 x 90 x 20 (1)



CABINET # 1 - D

L.Reveal = 1/16	R.Reveal = 1/16	T.Reveal = 0	B.Reveal = 1/2
Left End = Finished	Right End = Finished	H.Reveal = 1/8	V.Reveal = 1/8
Toe Height = 3 1/16	Toe Recess = 3/16	Back = Unfinished	

Architectural Cabinetry

www.panelbed.com

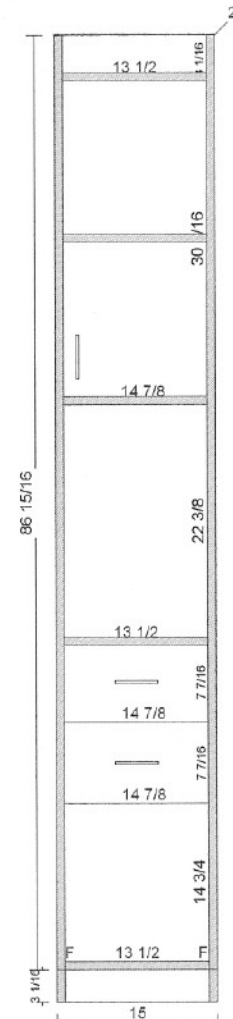
This is not exact information, some items may vary

Room # 1 (Room 1) - Wall # 1

Date : 08-22-2003

(1)	DOORS			
	14 7/8	30 1/16	Mel Slab	White Mel
(2)	DRAWERS			
	14 7/8	7 7/16	Mel front	White Mel
	PANEL STOCK			
(1)	3 1/16	13 1/2	Valance	Mel White
(1)	20	90	Finished Left End	Mel White
(1)	20	90	Finished Right End	Mel White
(1)	20	13 1/2	Deck	Mel White
(1)	3 1/16	13 1/2	Front Toe	Mel White
(1)	20	13 1/2	Top	Mel White
(1)	20	13 1/2	Horiz Partion	Mel White
(2)	20	13 1/2	Adjustable Shelf	Mel White
(2)	12 5/16	19 5/8	Drawer Box Bottom	Mel white-16mm-48
(2)	5 1/4	12 5/16	Drawer Box Back	Mel white-16mm-48
	HARDWARE			
(4)	5 5/16	19 11/16	Drawer Guide	Metabox 20 x 6
(2)	1	2 1/2	Std Hinge	Salice 110
(1)	1/4	4	Door Pull	None Selected
(2)	1/4	4	Drawer Pull	None Selected

CABINET # 1 - E
15 x 90 x 20 (1)



CABINET # 1 - E

L.Reveal = 1/16	R.Reveal = 1/16	T.Reveal = 0	B.Reveal = 1/2
Left End = Finished	Right End = Finished	H.Reveal = 1/8	V.Reveal = 1/8
Toe Height = 3 1/16	Toe Recess = 3/16	Back = Unfinished	

Architectural Cabinetry

www.panelbed.com

This is not exact information, some items may vary

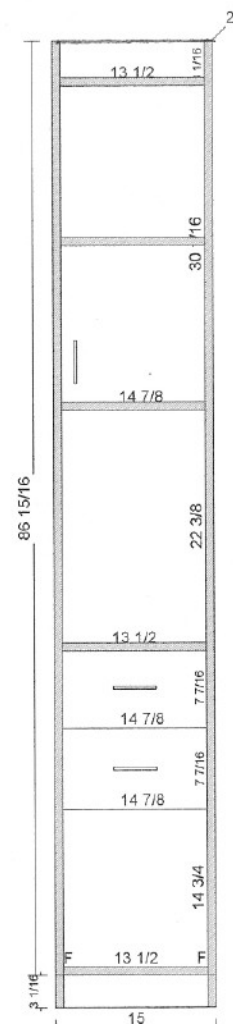
Room # 1 (Room 1) - Wall # 1

Date : 08-22-2003

(1)	DOORS			
	14 7/8	30 1/16	Mel Slab	White Mel
(2)	DRAWERS			
	14 7/8	7 7/16	Mel front	White Mel
	PANEL STOCK			
(1)	3 1/16	13 1/2	Valance	Mel White
(1)	20	90	Finished Left End	Mel White
(1)	20	90	Finished Right End	Mel White
(1)	20	13 1/2	Deck	Mel White
(1)	3 1/16	13 1/2	Front Toe	Mel White
(1)	20	13 1/2	Top	Mel White
(2)	20	13 1/2	Horiz Partion	Mel White
(1)	20	13 1/2	Adjustable Shelf	Mel White
(2)	12 5/16	19 5/8	Drawer Box Bottom	Mel white-16mm-48
(2)	5 1/4	12 5/16	Drawer Box Back	Mel white-16mm-48
	HARDWARE			
(4)	5 5/16	19 11/16	Drawer Guide	Metabox 20 x 6
(2)	1	2 1/2	Std Hinge	Salice 110
(2)	1/4	4	Drawer Pull	None Selected
(1)	1/4	4	Door Pull	None Selected

CABINET # 1 - F

15 x 90 x 20 (1)



CABINET # 1 - F

L.Reveal = 1/16	R.Reveal = 1/16	T.Reveal = 0	B.Reveal = 1/2
Left End = Finished	Right End = Finished	H.Reveal = 1/8	V.Reveal = 1/8
Toe Height = 3 1/16	Toe Recess = 3/16	Back = Unfinished	

Architectural Cabinetry

www.panelbed.com

This is not exact information, some items may vary

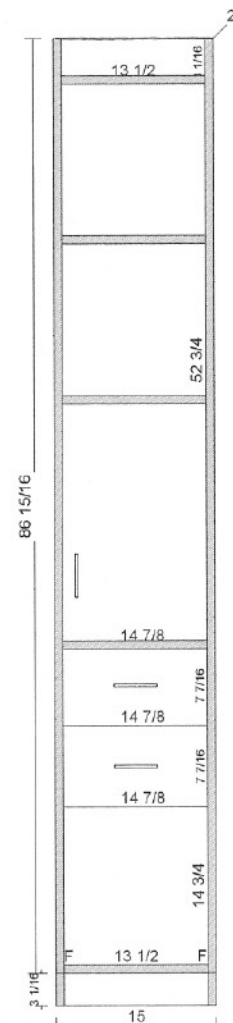
Room # 1 (Room 1) - Wall # 1

Date : 08-22-2003

(1)	DOORS			
	14 7/8	52 3/4	Mel Slab	White Mel
(2)	DRAWERS			
	14 7/8	7 7/16	Mel front	White Mel
	PANEL STOCK			
(1)	3 1/16	13 1/2	Valance	Mel White
(1)	20	90	Finished Left End	Mel White
(1)	20	90	Finished Right End	Mel White
(1)	20	13 1/2	Deck	Mel White
(1)	3 1/16	13 1/2	Front Toe	Mel White
(1)	20	13 1/2	Top	Mel White
(1)	20	13 1/2	Horiz Partion	Mel White
(2)	20	13 1/2	Adjustable Shelf	Mel White
(2)	12 5/16	19 5/8	Drawer Box Bottom	Mel white-16mm-48
(2)	5 1/4	12 5/16	Drawer Box Back	Mel white-16mm-48
	HARDWARE			
(4)	5 5/16	19 11/16	Drawer Guide	Metabox 20 x 6
(3)	1	2 1/2	Std Hinge	Salice 110
(1)	1/4	4	Door Pull	None Selected
(2)	1/4	4	Drawer Pull	None Selected

CABINET # 1 - G

15 x 90 x 20 (1)



CABINET # 1 - G

L.Reveal = 1/16	R.Reveal = 1/16	T.Reveal = 0	B.Reveal = 1/2
Left End = Finished	Right End = Finished	H.Reveal = 1/8	V.Reveal = 1/8
Toe Height = 3 1/16	Toe Recess = 3/16	Back = Unfinished	

Architectural Cabinetry

www.panelbed.com

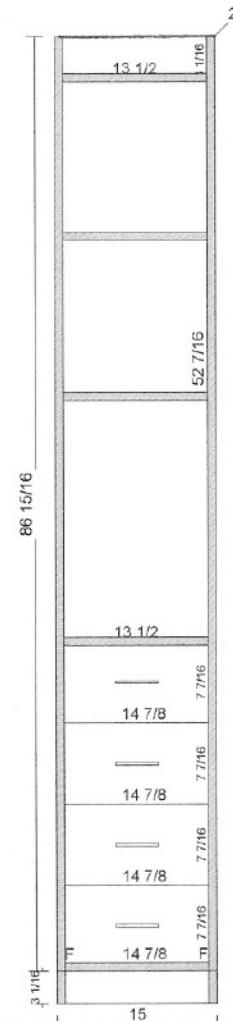
This is not exact information, some items may vary

Room # 1 (Room 1) - Wall # 1

Date : 08-22-2003

DRAWERS			
(4)	14 7/8	7 7/16	Mel front White Mel
PANEL STOCK			
(1)	3 1/16	13 1/2	Valance Mel White
(1)	20	90	Finished Left End Mel White
(1)	20	90	Finished Right End Mel White
(1)	20	13 1/2	Deck Mel White
(1)	3 1/16	13 1/2	Front Toe Mel White
(1)	20	13 1/2	Top Mel White
(1)	20	13 1/2	Horiz Partion Mel White
(2)	20	13 1/2	Adjustable Shelf Mel White
(4)	12 5/16	19 5/8	Drawer Box Bottom Mel white-16mm-48
(4)	5 1/4	12 5/16	Drawer Box Back Mel white-16mm-48
HARDWARE			
(8)	5 5/16	19 11/16	Drawer Guide Metabox 20 x 6
(4)	1/4	4	Drawer Pull None Selected

CABINET # 1 - H
15 x 90 x 20 (1)



CABINET # 1 - H

L.Reveal = 1/16	R.Reveal = 1/16	T.Reveal = 0	B.Reveal = 1/2
Left End = Finished	Right End = Finished	H.Reveal = 1/8	V.Reveal = 1/8
Toe Height = 3 1/16	Toe Recess = 3/16	Back = Unfinished	

Architectural Cabinetry

www.panelbed.com

This is not exact information, some items may vary

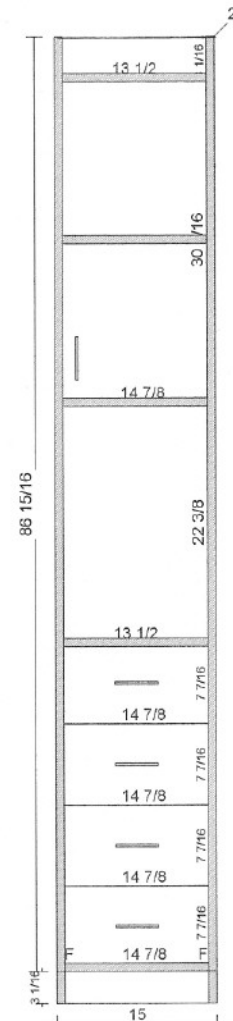
Room # 1 (Room 1) - Wall # 1

Date : 08-22-2003

(1)	DOORS	14 7/8	30 1/16	Mel Slab	White Mel
(4)	DRAWERS	14 7/8	7 7/16	Mel front	White Mel
PANEL STOCK					
(1)		3 1/16	13 1/2	Valance	Mel White
(1)		20	90	Finished Left End	Mel White
(1)		20	90	Finished Right End	Mel White
(1)		20	13 1/2	Deck	Mel White
(1)		3 1/16	13 1/2	Front Toe	Mel White
(1)		20	13 1/2	Top	Mel White
(1)		20	13 1/2	Horiz Partion	Mel White
(2)		20	13 1/2	Adjustable Shelf	Mel White
(4)		12 5/16	19 5/8	Drawer Box Bottom	Mel white-16mm-48
(4)		5 1/4	12 5/16	Drawer Box Back	Mel white-16mm-48
HARDWARE					
(8)		5 5/16	19 11/16	Drawer Guide	Metabox 20 x 6
(2)		1	2 1/2	Std Hinge	Salice 110
(1)		1/4	4	Door Pull	None Selected
(4)		1/4	4	Drawer Pull	None Selected

CABINET # 1 - I

15 x 90 x 20 (1)



CABINET # 1 - I

L.Reveal = 1/16	R.Reveal = 1/16	T.Reveal = 0	B.Reveal = 1/2
Left End = Finished	Right End = Finished	H.Reveal = 1/8	V.Reveal = 1/8
Toe Height = 3 1/16	Toe Recess = 3/16	Back = Unfinished	

Architectural Cabinetry

www.panelbed.com

This is not exact information, some items may vary

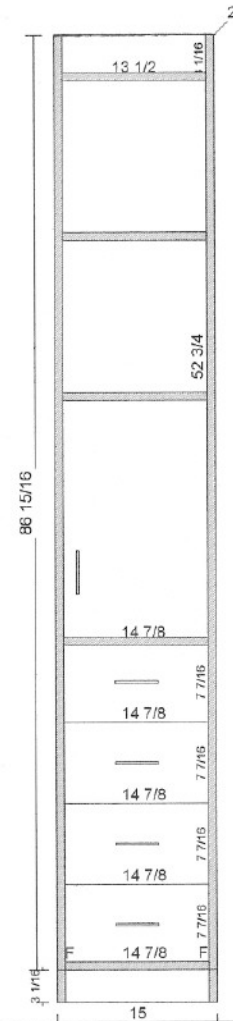
Room # 1 (Room 1) - Wall # 1

Date : 08-22-2003

(1)	DOORS	14 7/8	52 3/4	Mel Slab	White Mel
(4)	DRAWERS	14 7/8	7 7/16	Mel front	White Mel
	PANEL STOCK				
(1)		3 1/16	13 1/2	Valance	Mel White
(1)		20	90	Finished Left End	Mel White
(1)		20	90	Finished Right End	Mel White
(1)		20	13 1/2	Deck	Mel White
(1)		3 1/16	13 1/2	Front Toe	Mel White
(1)		20	13 1/2	Top	Mel White
(1)		20	13 1/2	Horiz Partion	Mel White
(2)		20	13 1/2	Adjustable Shelf	Mel White
(4)		12 5/16	19 5/8	Drawer Box Bottom	Mel white-16mm-48
(4)		5 1/4	12 5/16	Drawer Box Back	Mel white-16mm-48
	HARDWARE				
(8)		5 5/16	19 11/16	Drawer Guide	Metabox 20 x 6
(2)		1	2 1/2	Std Hinge	Salice 110
(1)		1/4	4	Door Pull	None Selected
(4)		1/4	4	Drawer Pull	None Selected

CABINET # 1 - J

15 x 90 x 20 (1)



CABINET # 1 - J

L.Reveal = 1/16	R.Reveal = 1/16	T.Reveal = 0	B.Reveal = 1/2
Left End = Finished	Right End = Finished	H.Reveal = 1/8	V.Reveal = 1/8
Toe Height = 3 1/16	Toe Recess = 3/16	Back = Unfinished	

Architectural Cabinetry

www.panelbed.com

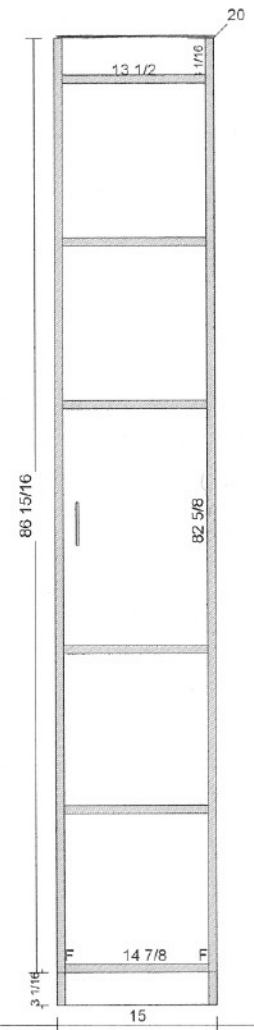
This is not exact information, some items may vary

Room # 1 (Room 1) - Wall # 1

Date : 08-22-2003

DOORS			
(1)	14 7/8	82 5/8	Mel Slab White Mel
PANEL STOCK			
(1)	3 1/16	13 1/2	Valance Mel White
(1)	20	90	Finished Left End Mel White
(1)	20	90	Finished Right End Mel White
(1)	20	13 1/2	Deck Mel White
(1)	3 1/16	13 1/2	Front Toe Mel White
(1)	20	13 1/2	Top Mel White
(1)	20	13 1/2	Horiz Partion Mel White
(3)	20	13 1/2	Adjustable Shelf Mel White
HARDWARE			
(4)	1	2 1/2	Std Hinge Salice 110
(1)	1/4	4	Door Pull None Selected

CABINET # 1 - K
15 x 90 x 20 (1)



CABINET # 1 - K

L.Reveal = 1/16	R.Reveal = 1/16	T.Reveal = 0	B.Reveal = 1/2
Left End = Finished	Right End = Finished	H.Reveal = 1/8	V.Reveal = 1/8
Toe Height = 3 1/16	Toe Recess = 3/16	Back = Unfinished	

Architectural Cabinetry

www.panelbed.com

This is not exact information, some items may vary

Room # 1 (Room 1) - Wall # 1

Date : 08-22-2003